

5.1.2.e

5.1.2.e

ASP 200 Utrecht

Constructieschetsen

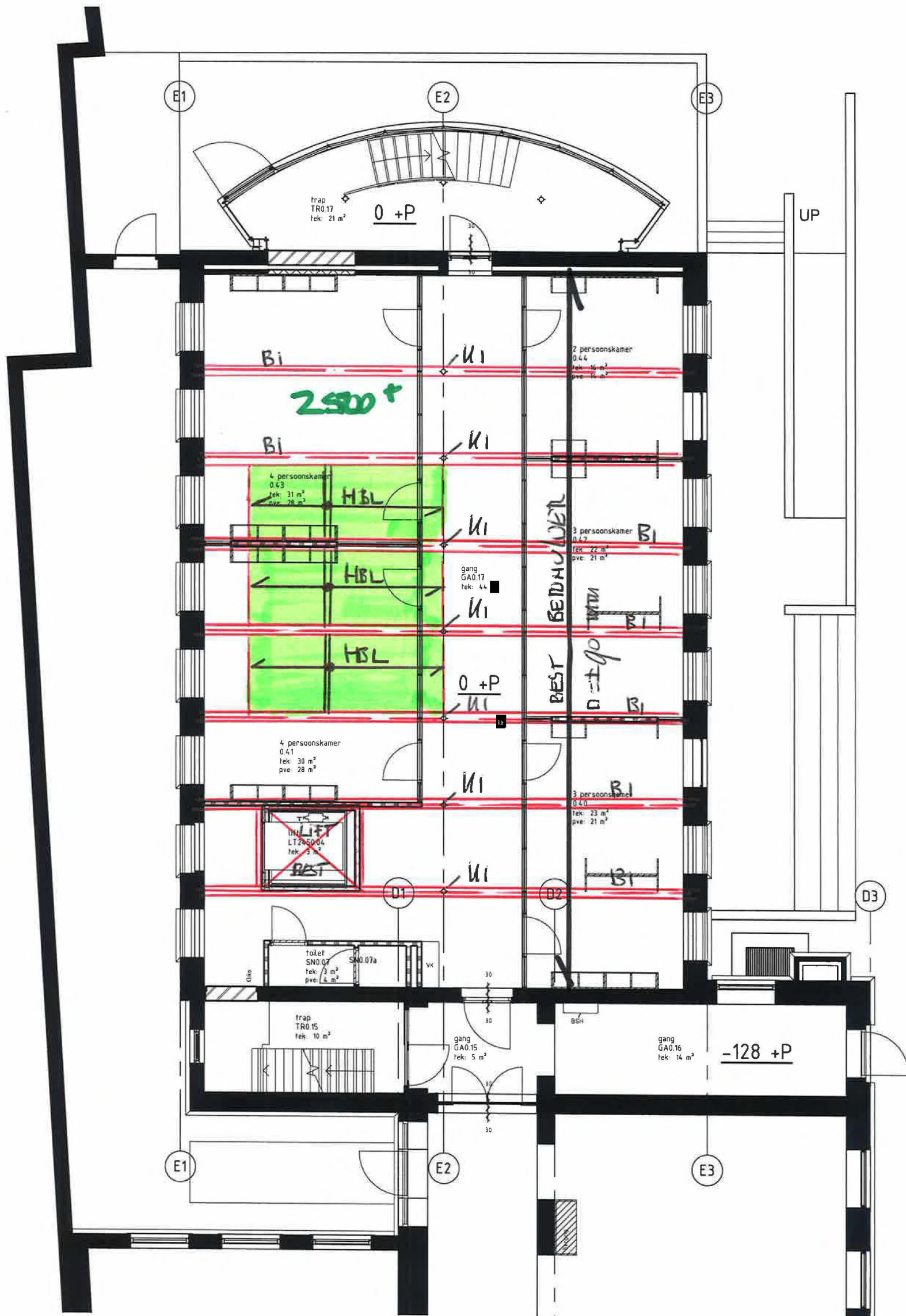
Bouwdeel E

Omgevingsvergunning



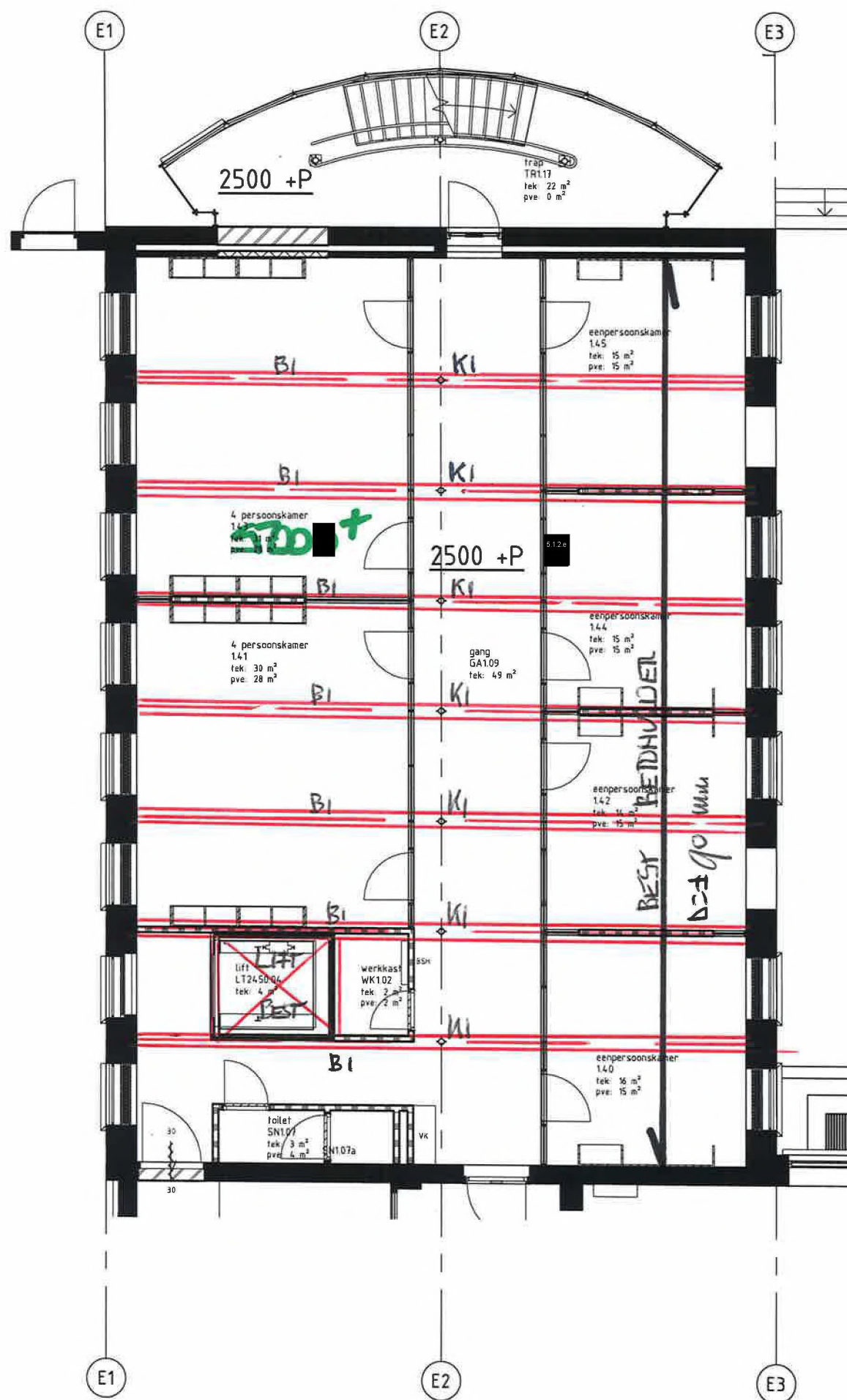
Vh = best. stalen kolom
 B1 = best. stalen balk 18B

HBL = 71x171 mm NIEUW
 HOH 600 mm



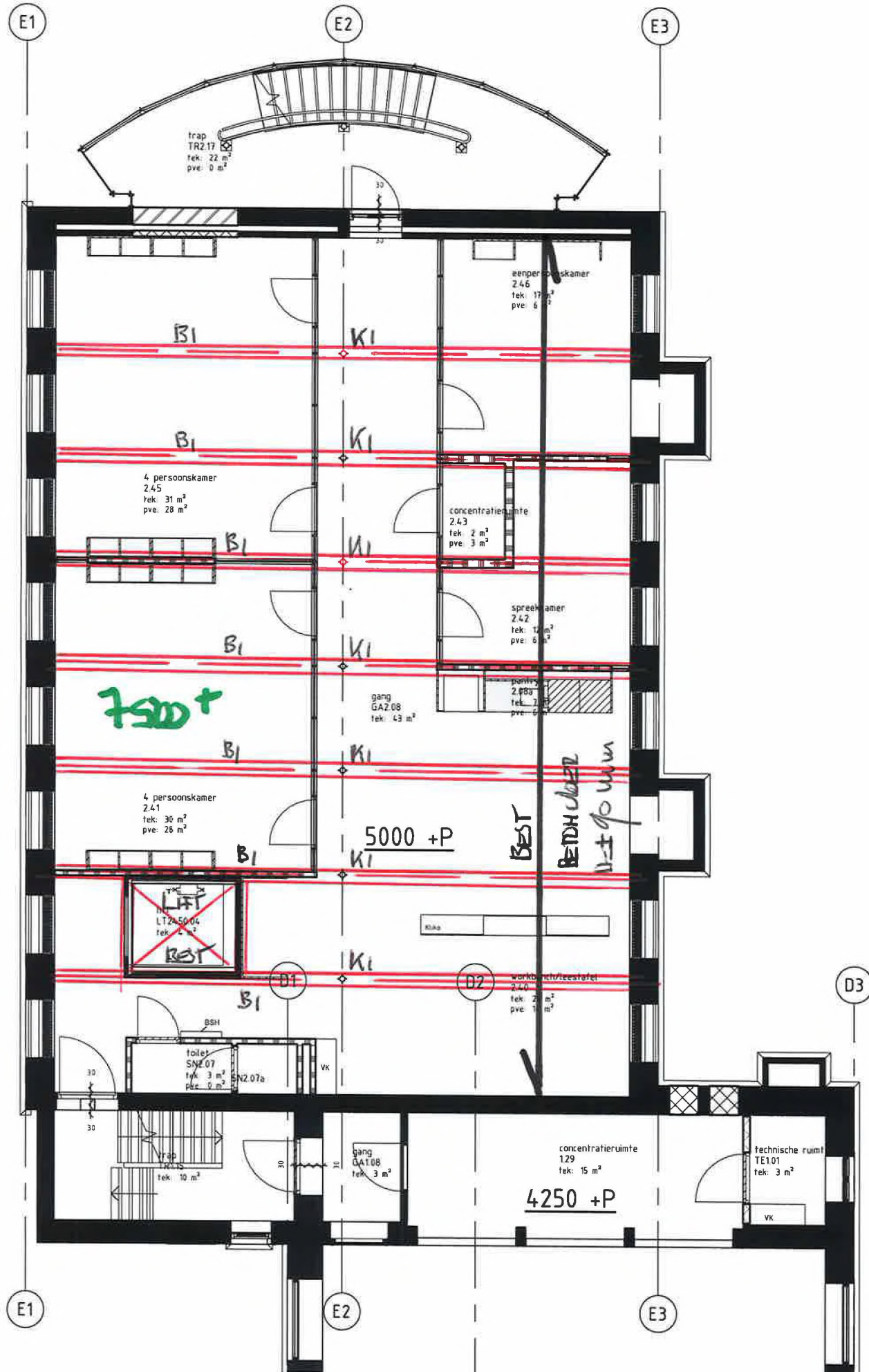
1e verd. over Bouwdeel E

K_1 = best. stalen vloer
 B_1 = best stalen balk 18B



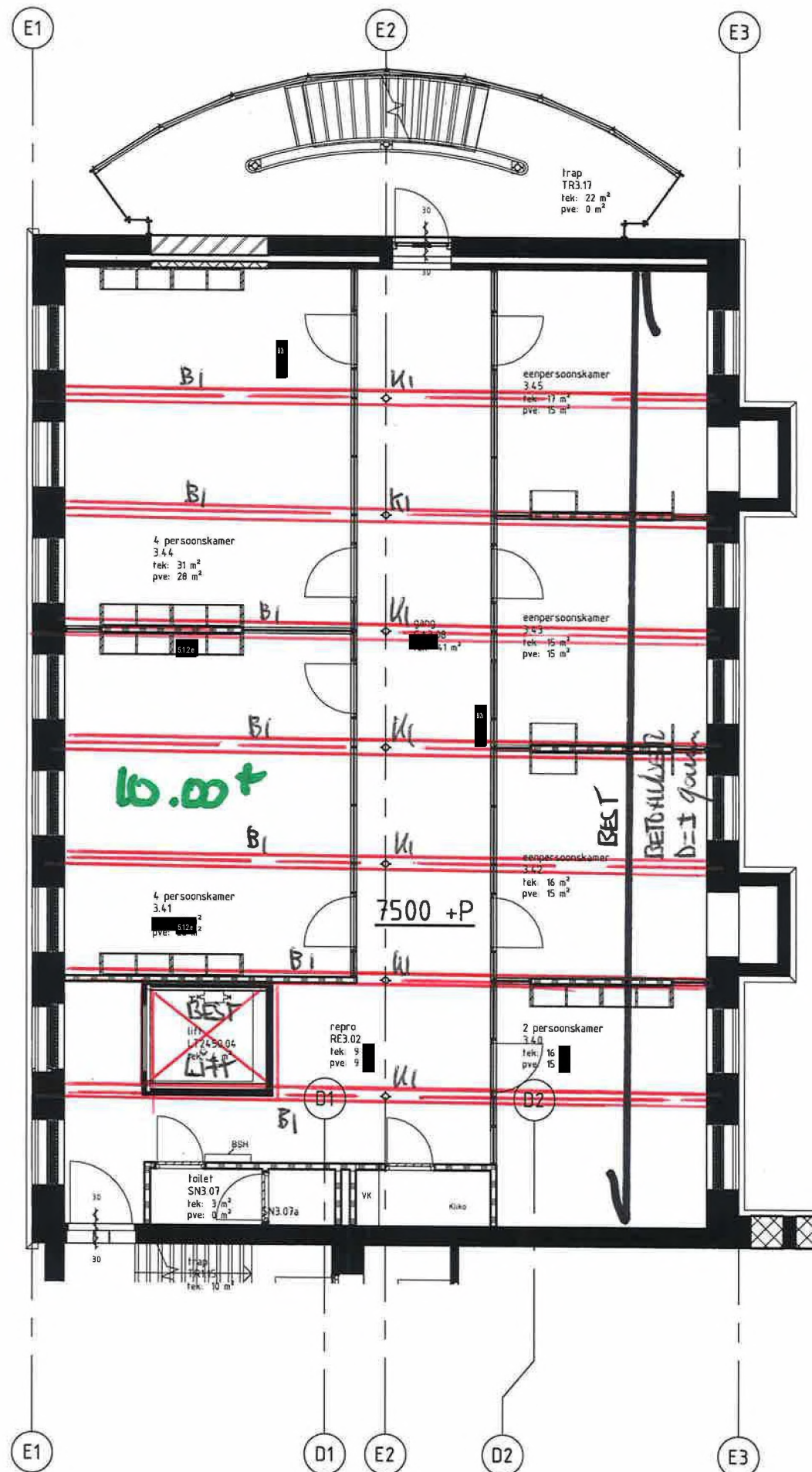
2e verd. vloer Bouwdeel E

$K_1 =$ best. stalen kolom
 $B_1 =$ best. stalen buik 18 B



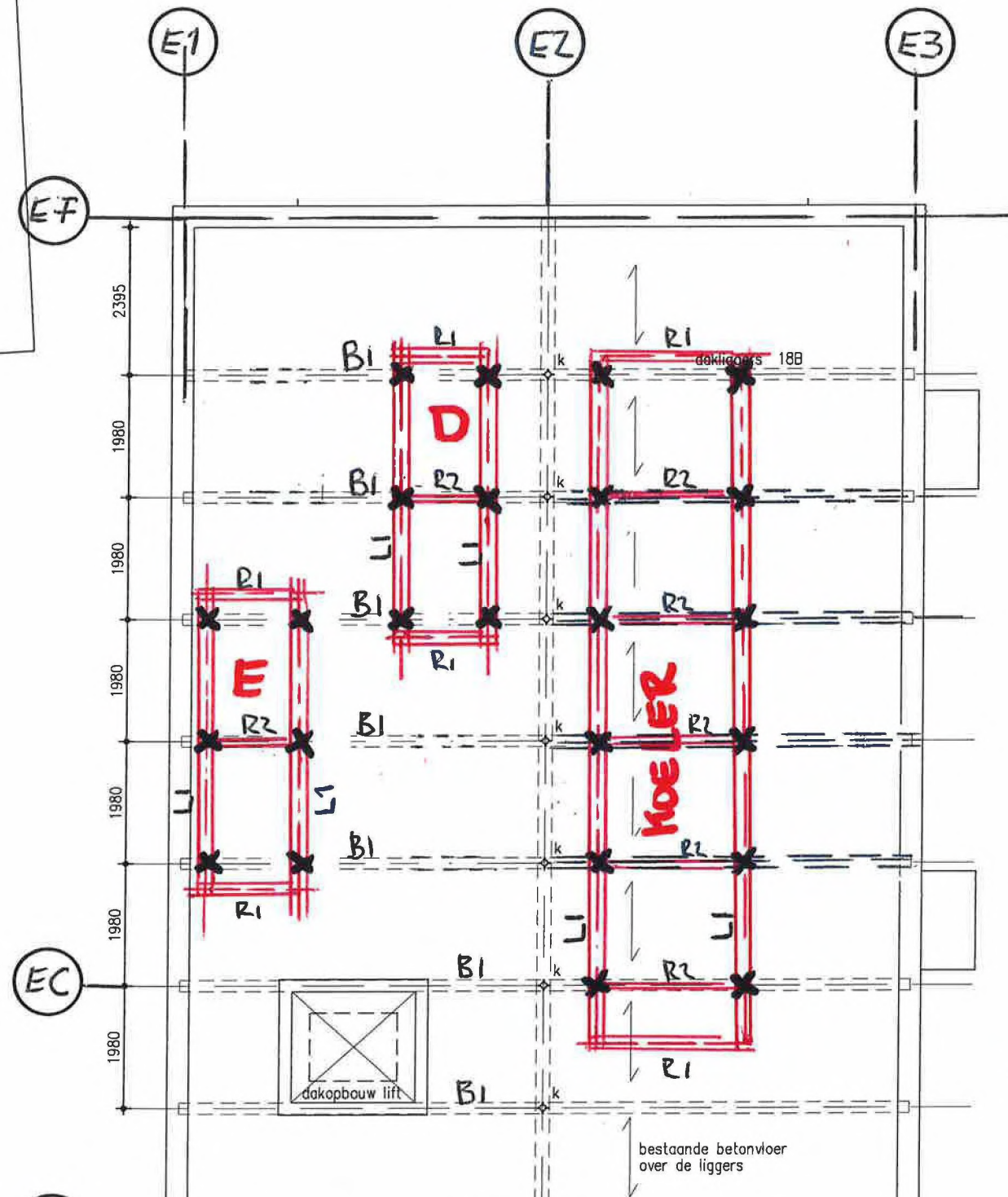
3e verd. Joer bouw deel E

U1 = best. staten Uebur
B1 = best. staten brüU 18B



4e verd. vloer bouwdeel E

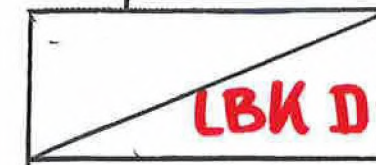
B1 = BESTAANDE BALU 18B



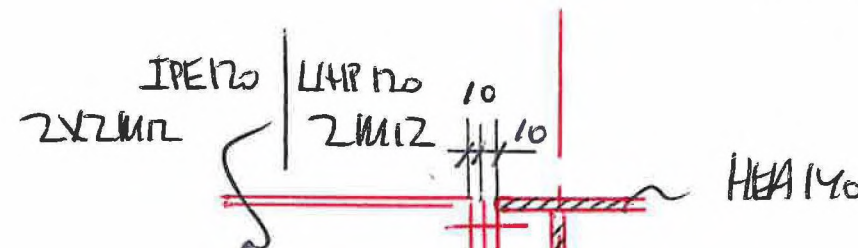
X = "proefje" 100x100x4

L1: HEA140
R1: LHP120
R2: IPE120

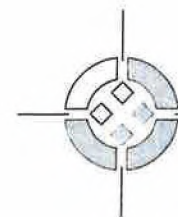
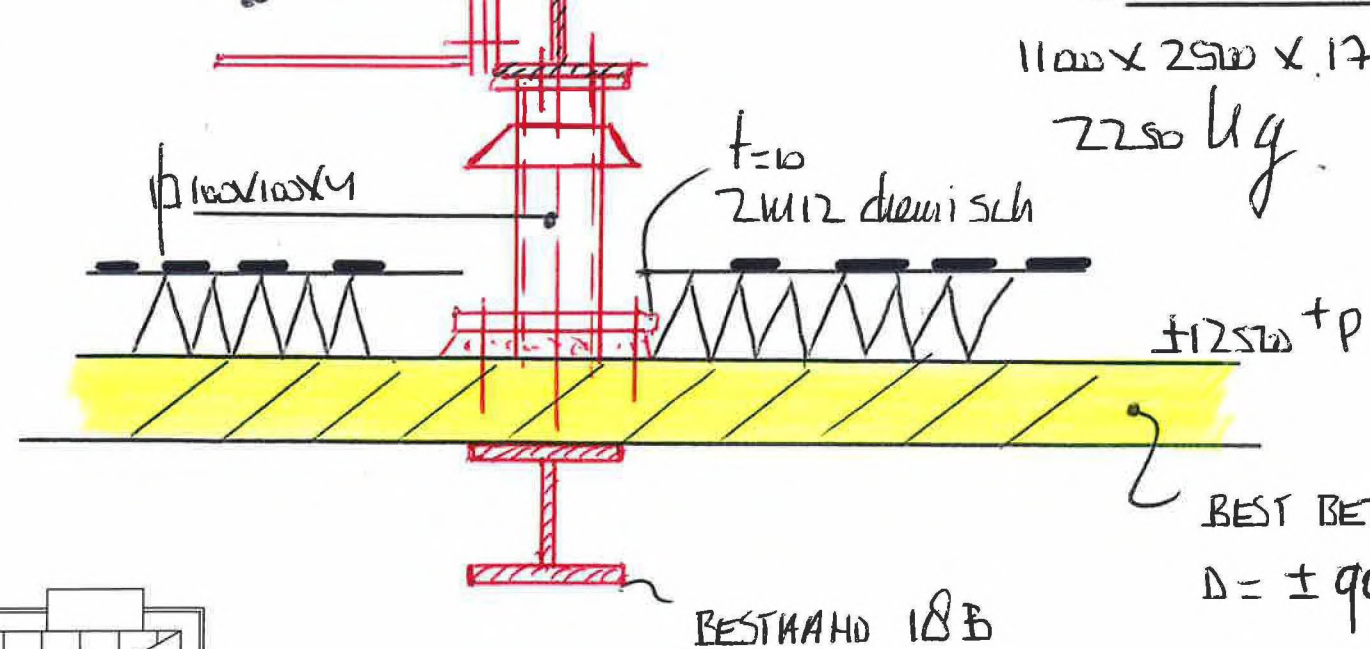
LxBxH 4600 x 1520 x 2000
1250 kg



LxBxH 4600 x 1520 x 2000
1250 kg



LxBxH 1100 x 2500 x 1700
2250 kg



VANDER WEIDE ♦ VAN BRAGT bv
ingenieursbureau voor bouwconstructies

bouwdeel E **DAK VLOER**

Onderdeel overzicht dak
nivo 12500+p

Schaal	Datum
1:100	Gewijzigd
Getekend	A
5.12e	B
Constructeur	C
5.12e	D
	E
	F
	G
	H
Projectnr.	Blad
B17107	E1